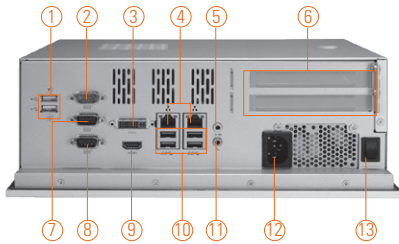
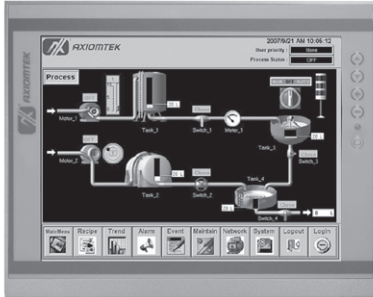


# P1127E-871

12.1" XGA TFT Intel® Core™ Family/  
Pentium®/Celeron® Expandable Industrial  
Touch Panel Computer with 2 PCIe or  
2 PCI Slots



- |   |                             |
|---|-----------------------------|
| 1. USB 2.0 x 2                          | 8. COM 2 (RS-232)           |
| 2. COM 3 with 5V & 12V (RS-232)         | 9. HDMI                     |
| 3. DVI-I                                | 10. USB 3.0 x 4             |
| 4. Ethernet x 2                         | 11. Audio (MIC-in)          |
| 5. Audio (Line-out)                     | 12. AC plug                 |
| 6. PCIe x8 x 2 or PCI x 2               | 13. Switch for power on/off |
| 7. COM 1 with 5V & 12V (RS-232/422/485) |                             |



## Introduction

The P1127E-871 is a multimedia 12.1" touch panel PC for kiosk application. It has a fashionable mechanism design and industrial-grade material front bezel which can avoid damage from chemical corrosion. To meet the demands of multimedia application, the P1127E-871 is powered by a high performance 3rd & 2nd Generation Intel® Core™ i7/i5/i3, Celeron®, Pentium® & Xeon® processors with the Intel® C216 chipset. It features three COM ports, two Gigabit Ethernet and up to 16GB memory of dual-channel DDR3 that delivers high computing capability for high performance-demanding applications. The industrial panel PC is most suitable for kiosk, factory and automation.

### Dual Monitor Display

The P1127E-871 supports DVI and HDMI simultaneously that features the use of dual display devices for increasing the area available for programs running on a single computer system. It not only increases larger screen viewing but also improves the productivity.

### Expandable for 2 PCIe or 2 PCI

The P1127E-871 has 2 PCIe x8 or 2 PCI slots for expansion purpose. User can easily plug in standard half-size PCI or PCIe card for any requirement.

### Speaker and WLAN Antenna Supported

The P1127E-871 features built-in speakers for kiosk application to display multimedia content program. It also supports WLAN module antenna (optional) for wireless network connectivity.

### Friendly Less Screw Design

Removing the back cover to maintain the system in unscrewing 3 screws only that saving your time and increasing our work efficiency many times.

## Features

- 12.1" XGA TFT LCD display
- LGA1155 socket 3rd & 2nd generation Intel® Core™ i7/i5/i3, Celeron®, Pentium® & Xeon® processor
- Intel® C216 chipset
- Easy installation: a less screw design for user's convenience
- 4 USB 3.0, 2 USB 2.0 and 3 COM ports
- Flexible expansion interface (two PCIe or two PCI slots)
- Built-in speakers and optional Wi-Fi 802.11 b/g/n module
- Robust aluminum with IP65 compliant front bezel design



▲ Side view

## Specifications

Front Bezel	Aluminum w/ IP65/NEMA 4 rugged protection	
LCD Panel	Display Type	12.1" XGA TFT LCD
	Brightness	500 nits
	Resolution	1024 x 768 pixels
	Viewing Angle	160°/140°
Main System	CPU	LGA1155 socket 3rd & 2nd Generation Intel® Core™ i7/i5/i3, Celeron®, Pentium® & Xeon® processor
	Chipset	Intel® C216
	System Memory	2 x 204-pin DDR3 SO-DIMM max. up to 16 GB
	BIOS	AMI UEFI BIOS with OA 3.0 built
	Storage	1 x 2.5" SATA HDD
	Watchdog Timer	255 levels, 1~255 sec.

\* All specifications and photos are subject to change without notice.

## Specifications

IO Connector	1 x RS-232 (COM 2) 1 x RS-232/422/485 with 5V & 12V (COM 1) 1 x RS-232 with 5V & 12V (COM 3) 1 x DVI-I 1 x HDMI 4 x USB 3.0 2 x USB 2.0 2 x 10/100/1000 Mbps Ethernet 1 x Audio (Mic-in/Line-out)
Expansion Interface	2 x PCIe x8 or 2 x PCI
Touchscreen	5-wire resistive type Light transmission 79% 1 million activations (typical) at a single point
Power Supply	100 ~ 240VAC, 270W
Dimensions	311.5 mm (12.26") (W) x 111.85 mm (4.4") (D) x 250 mm (9.84") (H)
Packing Dimension	510 mm (20.08") (W) x 190 mm (7.48") (D) x 540 mm (21.26") (H)
Weight(net/gross)	5 kg (11.02 lb)/7.1 kg (15.65 lb)
Environment	Operating Temperature: 0° ~ +45°C (+32°F ~ +113°F) Storage Temperature: -40°C ~ +80°C (-40°F ~ +176°F) Relative humidity: 10 ~ 95%@40°C, non-considering Operating vibration: 1.0G, 5-500Hz, random
Certificate	CE

## Ordering Information

P1127E-871 w/ PCIe	12.1" XGA TFT Intel® Core™ i7/i5/i3, Celeron®, Pentium® & Xeon® processor expandable industrial touch panel computer with 2 PCIe x8 slots
P1127E-871 w/ PCI	12.1" XGA TFT Intel® Core™ i7/i5/i3, Celeron®, Pentium® & Xeon® processor expandable industrial touch panel computer with 2 PCI slots

\* Specification and certifications are based on options and may vary.

## Optional Accessories

82211271000E	Wireless LAN kit
82211270060E	VESA & WALL mount kit
E202003330	VM-101 (VESA ARM clamp type)
E202003329	VM-105 (VESA ARM wall-mount)

## Optional OS Installation

Windows® XP
Windows® Vista
Windows® 7/8/8.1
Windows® Embedded 7/8

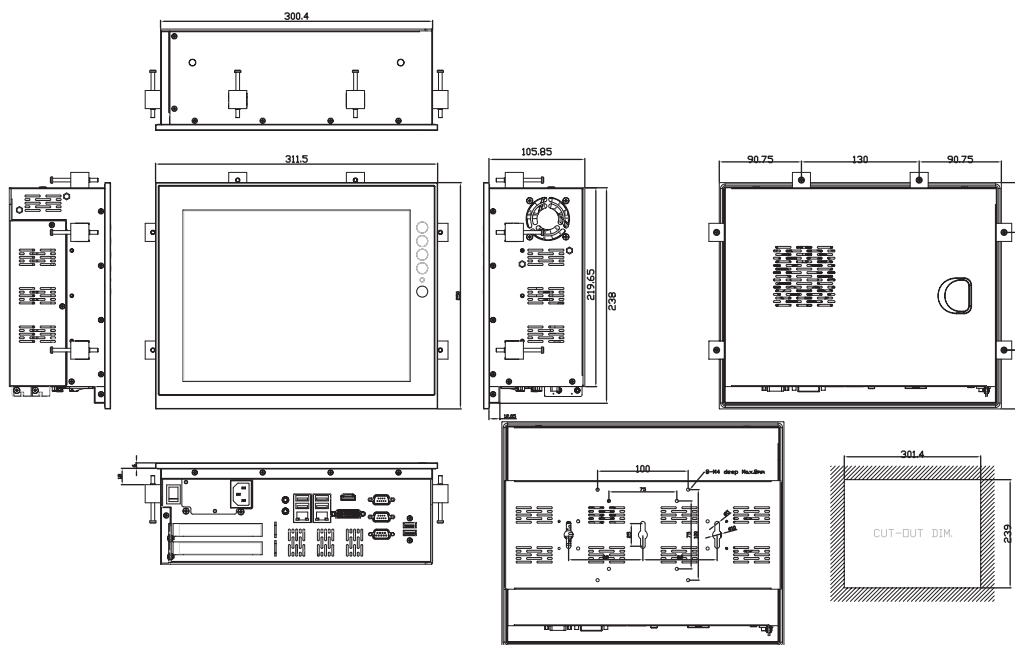


▲ Expandible design



▲ Less screw design

## Dimensions



\* All specifications and photos are subject to change without notice.

