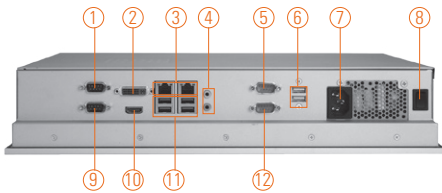
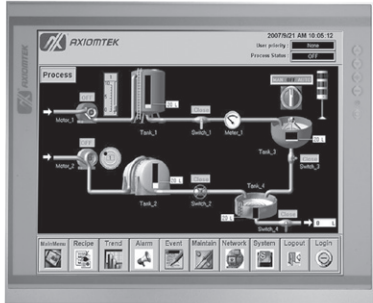


P1157S-871

15" XGA TFT Intel® Core™ i family/
Pentium®/ Celeron® Slim Industrial Touch
Panel Computer



- | | | |
|---|-------------------|--------------------|
| 1. COM 1 with 5V & 12V (RS-232/422/485) | 6. USB 2.0 x 2 | 11. USB 3.0 x 4 |
| 2. DVI-I | 7. AC plug | 12. COM 4 (RS-232) |
| 3. Ethernet x 2 | 8. Power switch | |
| 4. Audio (MIC-in/Line-out) | 9. COM 2 (RS-232) | |
| 5. COM 3 with 5V & 12V (RS-232) | 10. HDMI | |



Introduction

The P1157S-871 is a multimedia 15" touch panel PC for kiosk application. It has a fashionable mechanism design and industrial-grade material front bezel which can avoid damage from chemical corrosion. To meet the demands of multimedia application, the P1157S-871 is powered by a high performance LGA1155 socket 3rd & 2nd Generation Intel® Core™ i7/i5/i3, Pentium® & Celeron® processors with the Intel® Q77 Express chipset. It features four COM ports, two Gigabit Ethernet and up to 16 GB memory of dual-channel DDR3 that delivers high computing capability for high performance-demanding applications. The industrial panel PC is most suitable for kiosk, factory and automation.

Dual Monitor Display

The P1157S-871 supports DVI and HDMI simultaneously that features the use of dual display devices for increasing the area available for programs running on a single computer system. It not only increases larger screen viewing but also improves personal productivity.

Speaker and WLAN Antenna Supported

The P1157S-871 features built-in speakers for kiosk application to display multimedia content program. It also supports WLAN module antenna (optional) for wireless network connectivity.

Friendly Less Screw Design

Removing the back cover to maintain the system in unscrewing 3 screws only that saving your time and increasing our work efficiency many times.

Features

- 15" XGA TFT LCD display
- LGA1155 socket 3rd & 2nd Generation Intel® Core™ i7/i5/i3, Celeron® & Pentium® processor
- Intel® Q77 chipset
- Easy installation: a less screw design for user's convenience
- 4 USB 3.0, 2 USB 2.0 and 4 COM ports
- Built-in speakers and optional Wi-Fi 802.11 b/g/n module
- Robust aluminum with IP65 compliant front bezel design



▲ Side view

Specifications

Front Bezel	Aluminum w/ IP65/NEMA 4 rugged protection	
LCD Panel	Display Type	15" XGA TFT LCD
	Brightness	350 nits
	Resolution	1024 x 768 pixels
	Viewing Angle	160°/140°
Main System	CPU	LGA1155 socket 3rd & 2nd Generation Intel® Core™ i7/i5/i3, Celeron® & Pentium® processor
	Chipset	Intel® Q77
	System Memory	2 x 204-pin DDR3 SO-DIMM max. up to 16 GB
	BIOS	AMI UEFI BIOS with OA 3.0 built
	Storage	1 x 3.5" or 2 x 2.5" SATA HDD
	Watchdog Timer	255 levels, 1-255 sec.

* All specifications and photos are subject to change without notice.



Specifications

IO Connector	2 x RS-232 (COM 2 & COM 4) 1 x RS-232/422/485 with 5V & 12V (COM 1) 1 x RS-232 with 5V & 12V (COM 3) 1 x DVI-I 1 x HDMI 4 x USB 3.0 2 x USB 2.0 2 x 10/100/1000 Mbps Ethernet 1 x Audio (Mic-in/Line-out)
Expansion Interface	N/A
Touchscreen	5-wire resistive type Light transmission 79% 1 million activations (typical) at a single point
Power Supply	100 ~ 240VAC, 270W
Dimensions	378 mm (14.88") (W) x 72.2 mm (2.84") (D) x 309 mm (12.17") (H)
Packing Dimension	610 mm (24.02") (W) x 260 mm (10.24") (D) x 590 mm (23.23") (H)
Weight(net/gross)	5.2 kg (11.46 lb)/ 7.5 kg (16.53 lb)
Environment	Operating Temperature: 0° ~ +45°C (+32°F ~ +113°F) Storage Temperature: -20°C ~ +65°C (-4°F ~ +149°F) Relative humidity: 10 ~ 95%@40°C, non-considering Operating vibration: 1.0 G, 5-500Hz, random
Certificate	CE

Ordering Information

P1157S-871	15" XGA TFT Intel® Core™ i7/i5/i3, Celeron® & Pentium® processor slim industrial touch panel computer
------------	---

* Specification and certifications are based on options and may vary.

Optional Accessories

82211271000E	Wireless LAN kit
82211570050E	VESA & WALL mount kit
82211570060E	Rack mount kit
72211571000E	2 x 2.5" HDD Bracket
E202003330	VM-101 (VESA ARM clamp type)
E202003329	VM-105 (VESA ARM wall-mount)

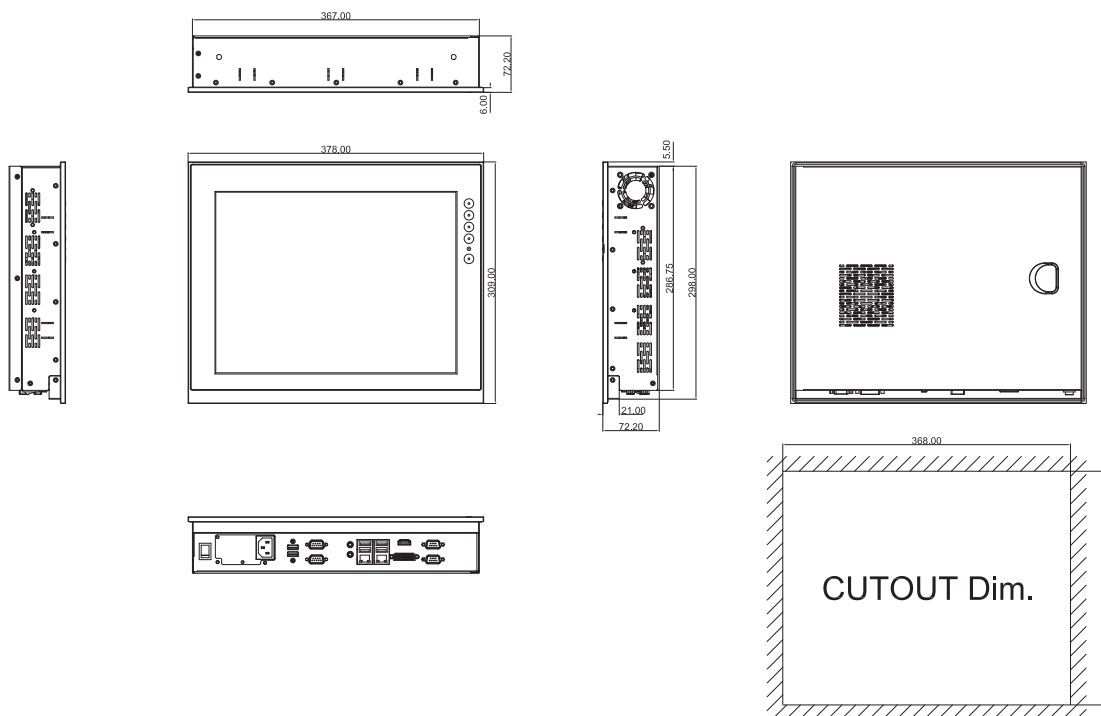
Optional OS Installation

Windows® XP
Windows® Vista
Windows® 7/8/8.1
Windows® Embedded 7/8



▲ Less screw design

Dimensions



* All specifications and photos are subject to change without notice.