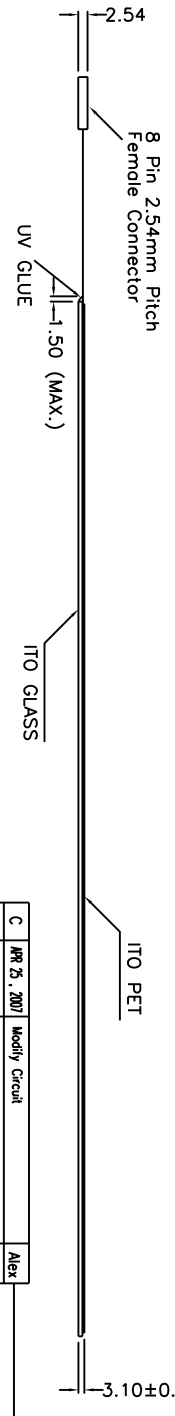
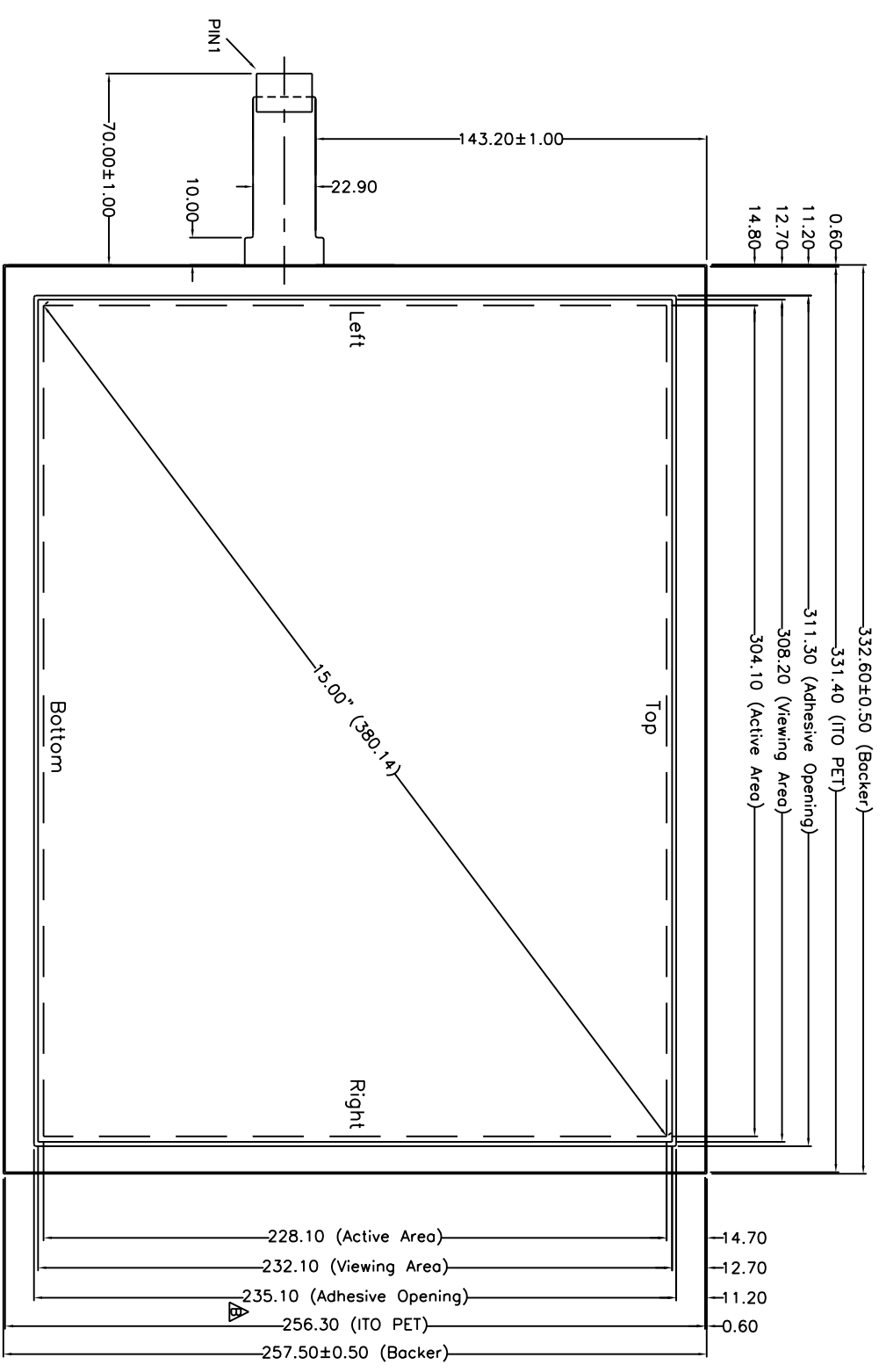


FRONT VIEW

Pin#	Assignment
1	Left
2	Left sense
3	Right sense
4	Right
5	Bottom
6	Bottom sense
7	Top sense
8	Top



- NOTES:
1. ITO GLASS THICKNESS : 2.80mm
 2. OVERALL THICKNESS : 3.10±0.30mm
 3. CONNECTOR AND PINOUT AS INDICATED
 4. FRONT SURFACE : ANTI-GLARE HARDCOAT
 5. LAYER TO LAYER ASSEMBLY TOLERANCE: ±0.50mm
 6. TAIL TYPE : IMMERSION GOLD PLATED FPC WITH AMP-C TIN PLATED CONTACTS
 7. OTHER SPEC : SEE APPROVAL SHEET



NO.	DATE	DESCRIPTION	CHK
C	APR 25, 2007	Modify Circuit	Alex
B	JUL 17, 2004	Modify Touch panel Hole & Adhesive Size	Alex
A	FEB 20, 2004	Modify Glass Thickness from 3.0 to 2.8mm	Alex

CHIEF OF DESIGN	APPROVED	PROJECT NUMBER	DATE	REV.
	Alex		APR 25, 2007	C

TOLERANCES UNLESS SPECIFIED	
.X	± 0.50
.XX	± 0.50
.XXX	± 0.30
ANGULAR	

Apex Material Technology Corp.

PROJECT NAME : 9526
DWG NO : 9526-3-012
SCALE: 1:1 UNIT: mm