



ENRICH YOUR VISUAL WORLD...



LITEMAX DLF/DLH1968 Sunlight Readable 19" LED B/L LCD

User Manual

(1st Edition 2010/9/30)

All information is subject to change without notice.

Approved by	Checked by	Prepared by

LITEMAX Electronics Inc.
 8F, No.137, Lane 235, Bau-chiau Rd.,
 Shin-dian City, Taipei County, Taiwan R.O.C.
 Tel : 886-2-8919-1858
 Fax: 886-2-8919-1300
 Homepage: <http://www.litemax.com.tw>

RECORD OF REVISION

Version and Date	Page	Old Description	New Description	Remark
Sep,30,2010	all		Preliminary Release	

Contents

RECORD OF REVISION	2
Contents	3
1.0 GENERAL DESCRIPTION	4
1.1 FEATURES	4
1.2 GENERAL SPECIFICATIONS.....	4
1.3 ABSOLUTE MAXIMUM RATINGS	4
2.0 Electrical characteristics	6
3.0 SIGNAL Characteristic	8
4.0 TIMING Characteristics	10
5.0 CONNECTOR and PIN ASSIGNMENT	12
6.0 OPTICAL SPECIFICATION	13
7.0 MEASURING METHOD	錯誤! 尚未定義書籤。
8.0 LED DRIVING BOARD SPECIFICATIONS	14
9.0 AD2662GDVAR SPECIFICATIONS(DLH1968 only)	17
9.1 General Description.....	17
9.2 Outline Dimensions	18
9.3 AD2662 Board Pin Define	21
J3: Panel connector	21
CN3: DVI-D INPUT Connector	21
CN5: DVI-D Connector (16pin 2.0mm)	22
CN2: Analog RGB Input connector (D-SUB 15Pin).....	22
CN4: Analog RGB Input connector (13pin connector).....	22
JS1: Power DIN(12V).....	22
JS1: Power Jack (12V).....	22
J1: Power connector (12V) (6PIN 2.0mm)	23
J8: Power connector (5V/12v)(4PIN 2.0mm).....	23
J2: Inverter Connector(8PIN 2.0mm).....	23
J7, J9: FAN (2PIN 2.0mm)	23
J6: Key Pad (9PIN 2.0mm)	23
J10: Speaker Connector (4PIN 2.0mm)	23
J11 Extern Funtion Connector (11P X 2PIN 2.0mm)	24
J5: Ambient (3PIN 2.0mm)	24
J4: VR connector (3PIN 2.0mm)	24
J12: IR Connector(3PIN 2.0mm).....	24
JP1: PANEL VCC (3PIN 2.54mm).....	24
9.4 I/O BOARD Pin Define	25
9.5 IR Receive Board Pin Define.....	26
9.6 DC Characteristics.	26
9.7 OSD menu	27
10.0 MECHANICAL DRAWING	32
11.0 PRECAUTIONS	32

1.0 GENERAL DESCRIPTION

DLF/DLH1968 is 19" wide color TFT-LCD module as active switching devices with 1,600nits LED backlight powered by Durapixel™ technology. This module has a 19 inch diagonally measured active area with SXGA resolutions (1280 horizontal by 1024 vertical pixel array). Each pixel is divided into RED, GREEN, BLUE dots which are arranged in vertical stripe and this module can display 16.7M colors.

1.1 FEATURES

- Sunlight Readable
- LED Backlight
- SXGA(1280x1024) High Definition
- High Shock & Vibration Resistance
- Low Power Consumption
- Wide Operation Temperature.
- High Uniformity
- Low EMI Noise
- Wide Dimming
- Life Expectancy

1.2 GENERAL SPECIFICATIONS

Description	19" TFT LCD, LED Backlight 1600nits,SXGA(1280x1024)
Display Area (mm)	376.3(H) x 301 mm
Brightness	1600 cd/m ²
Resolution	1280x1024 (SXGA)
Contrast Ratio	1000 : 1
Pixel Pitch (mm)	0.294(H) x 0.294(V)
Viewing Angle	+85°~-85°(H), +80°~-80°(V)
Display Colors	16.7M
Response Time (Typical)	5ms
Sync	LVDS
Power Consumption	40W
Dimensions (mm)	396x324.8x12mm
Weight (Net)	2.4kg

1.3 ABSOLUTE MAXIMUM RATINGS

TFT LCD Module

Item	Symbol	Min.	Max.	Unit	Conditions
Logic/LCD Drive Voltage	VDD	-0.3	+6	[Volt]	Note 1, 2

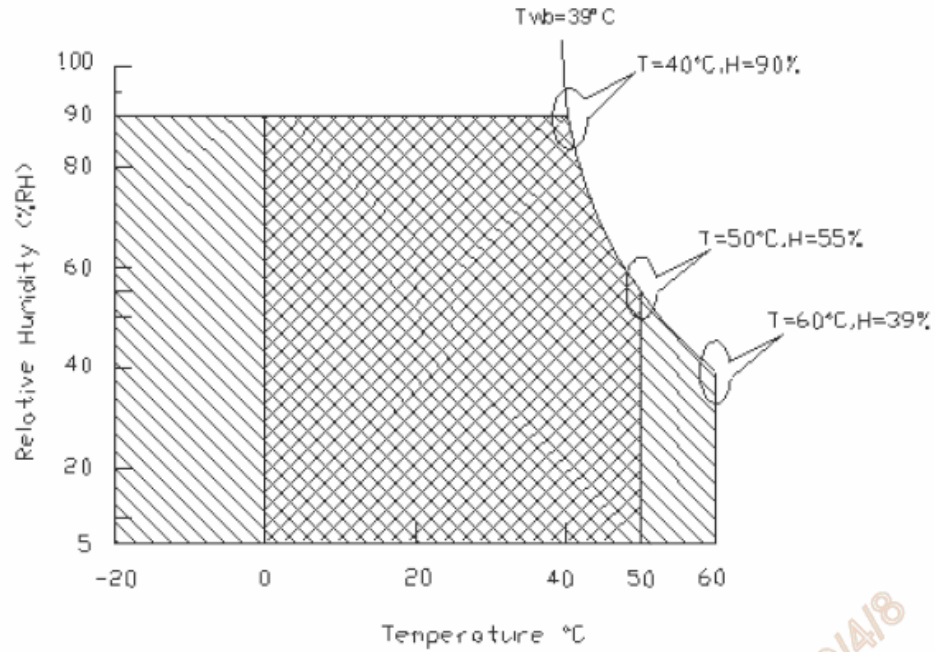
ABSOLUTE RATINGS OF ENVIRONMENT

Item	Symbol	Min.	Max.	Unit	Conditions
Operating Temperature	TOP	0	+50	[°C]	Note 3
Operation Humidity	HOP	5	90	[%RH]	
Storage Temperature	TST	-20	+60	[°C]	
Storage Humidity	HST	5	90	[%RH]	

Note 1: With in $T_a = 25^\circ\text{C}$

Note 2: Permanent damage to the device may occur if exceed maximum values

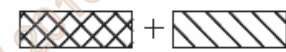
Note 3: For quality performance, please refer to IIS (Incoming Inspection Standard).



Operating Range



Storage Range



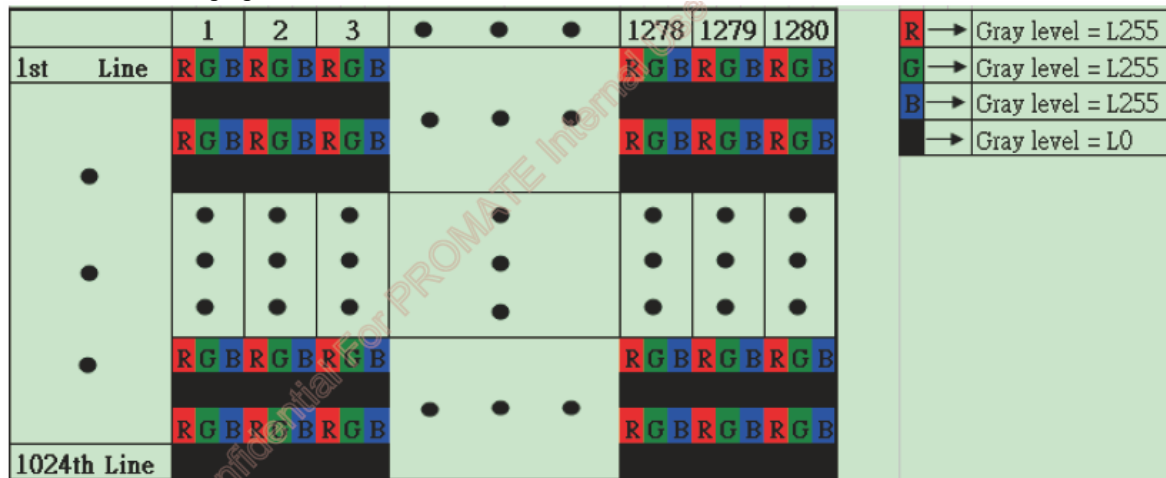
2.0 Electrical characteristics

TFT LCD Module Power Specification

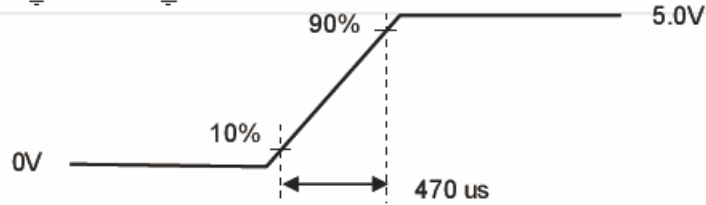
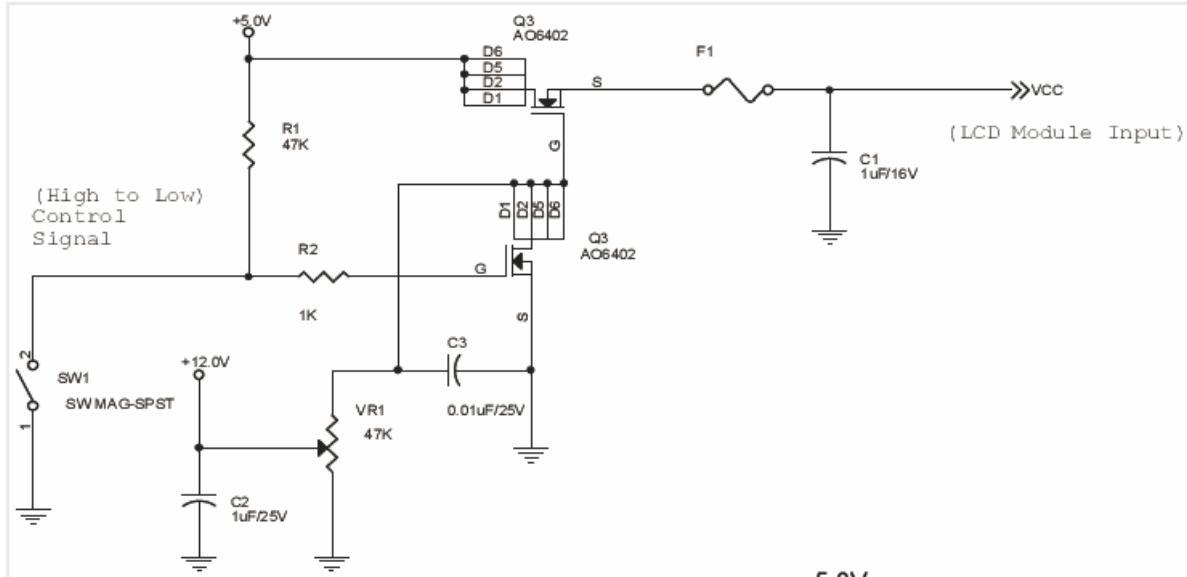
Input power specifications are as following:

Symbol	Parameter	Min	Typ	Max	Unit	Condition
VDD	Logic/LCD Drive Voltage	4.50	5.00	5.50	[Volt]	±10%
IDD	Input Current	-	1.10	1.31	[A]	VDD= 5.0V, All black Pattern, At 60Hz
IDD	Input Current	-	1.37	1.63	[A]	VDD= 5.0V, H-Stripe Pattern, At 75Hz Note1
PDD	VDD Power	-	5.50	6.55	[Watt]	VDD= 5.0V, All black Pattern, At 60Hz
PDD	VDD Power	-	6.85	8.15	[Watt]	VDD= 5.0V, H-Stripe Pattern, At 75Hz
IRush	Inrush Current	-	-	2.5	[A]	Note2
VDDrp	Allowable Logic/LCD Drive Ripple Voltage	-	-	100	[mV] p-p	VDD= 5.0V, All black Pattern, At 75Hz

Note 1: The H-Stripe pattern is defined as below:



Note 2: Measurement Conditions:



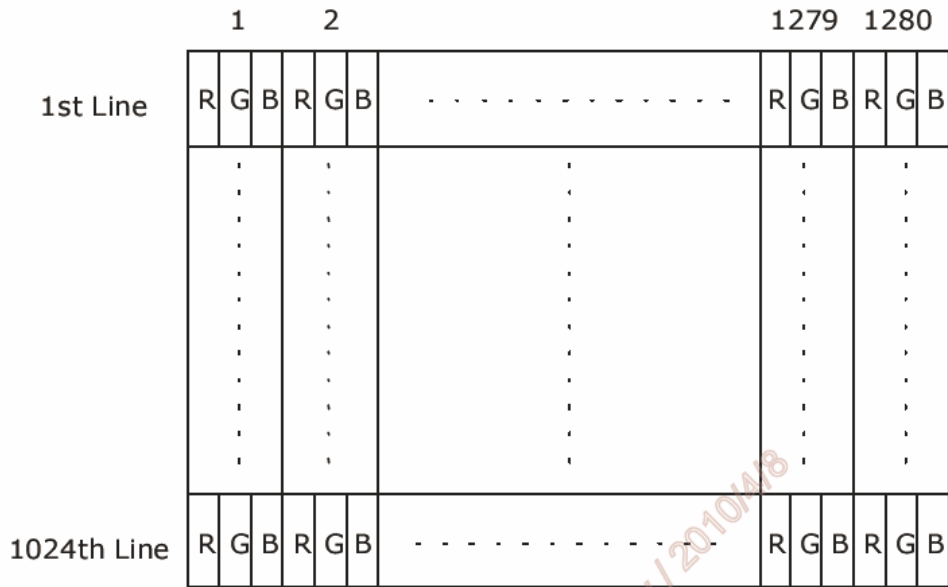
Vin rising time

2010/4/8

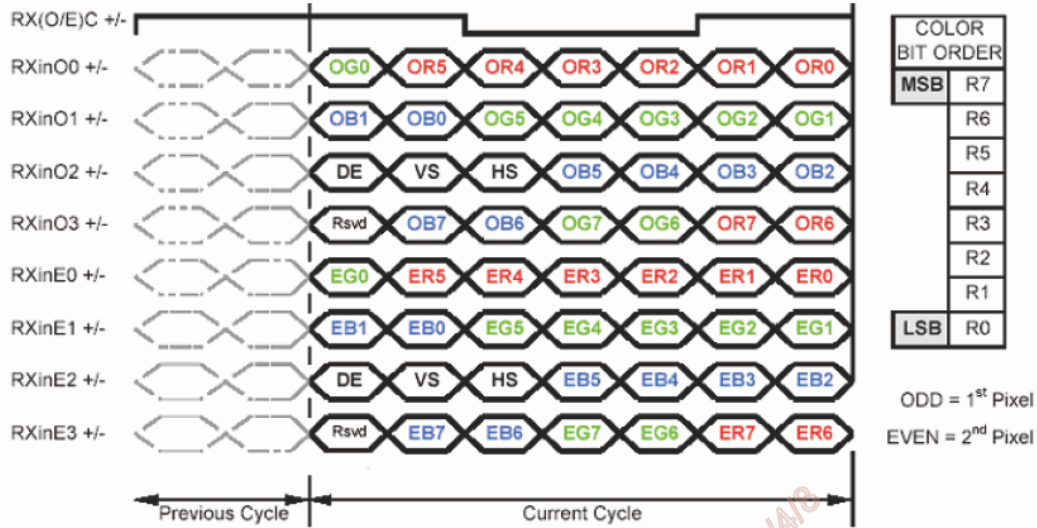
3.0 SIGNAL Characteristic

PIXEL FORMAT IMAGE

Following figure shows the relationship of the input signals and LCD pixel format.



INPUT DATA FORMAT



Note1: Normally DE mode only. VS and HS on EVEN channel are not used.

Note2: Please follow VESA.

Note3: 8-bit in

Signal Description

The module using one LVDS receiver SN75LVDS82(Texas Instruments). LVDS is a differential signal technology for LCD interface and high speed data transfer device. LVDS transmitters shall be SN75LVDS83(negative edge sampling). The first LVDS port(RxOxxx) transmits odd pixels while the second LVDS port(RxExxx) transmits even pixels.

PIN #	SIGNAL NAME	DESCRIPTION
1	RxOIN0-	Negative LVDS differential data input (Odd data)
2	RxOIN0+	Positive LVDS differential data input (Odd data)
3	RxOIN1-	Negative LVDS differential data input (Odd data)
4	RxOIN1+	Positive LVDS differential data input (Odd data)
5	RxOIN2-	Negative LVDS differential data input (Odd data, DSPTMG)
6	RxOIN2+	Positive LVDS differential data input (Odd data, DSPTMG)
7	GND	Power Ground
8	RxOCLK-	Negative LVDS differential clock input (Odd clock)
9	RxOCLK+	Positive LVDS differential clock input (Odd clock)
10	RxOIN3-	Negative LVDS differential data input (Odd data)
11	RxOIN3+	Positive LVDS differential data input (Odd data)
12	RxEIN0-	Negative LVDS differential data input (Even data)
13	RxEIN0+	Positive LVDS differential data input (Even data)
14	GND	Power Ground
15	RxEIN1-	Negative LVDS differential data input (Even data)
16	RxEIN1+	Positive LVDS differential data input (Even data)
17	GND	Power Ground
18	RxEIN2-	Negative LVDS differential data input (Even data)
19	RxEIN2+	Positive LVDS differential data input (Even data)
20	RxECLK-	Negative LVDS differential clock input (Even clock)
21	RxECLK+	Positive LVDS differential clock input (Even clock)
22	RxEIN3-	Negative LVDS differential data input (Even data)
23	RxEIN3+	Positive LVDS differential data input (Even data)
24	GND	Power Ground
25	NC	No connection (for AUO test only. Do not connect)
26	NC	No connection (for AUO test only. Do not connect)
27	VDD	Power +5V
28	VDD	Power +5V
29	VDD	Power +5V
30	VDD	Power +5V

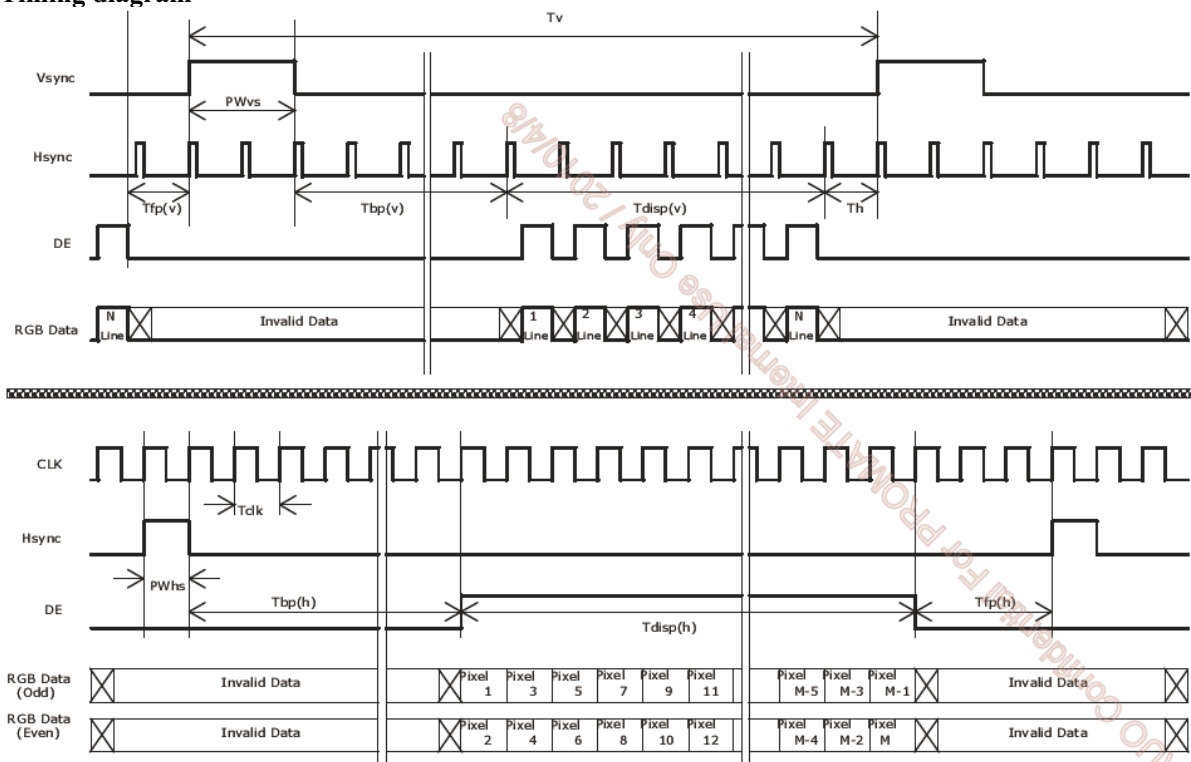
Note1: Start from left side

4.0 TIMING Characteristics

Signal	Item	Symbol	Min	Typ	Max	Unit
Vertical Section	Period	T_v	1032	1066	1150	Th
	Active	$T_{disp(v)}$	1024	1024	1024	Th
	Blanking	$T_{bp(v)}+T_{fp(v)}+PW_{vs}$	8	42	126	Th
Horizontal Section	Period	T_h	780	844	2047	Tclk
	Active	$T_{disp(h)}$	640	640	640	Tclk
	Blanking	$T_{bp(h)}+T_{fp(h)}+PW_{hs}$	140	204	-	Tclk
Clock	Period	T_{clk}	22.2	18.52	14.81	ns
	Frequency	Freq.	45	54	67.5	MHz
Frame Rate	Frequency	$1/T_v$	50	60	75	Hz

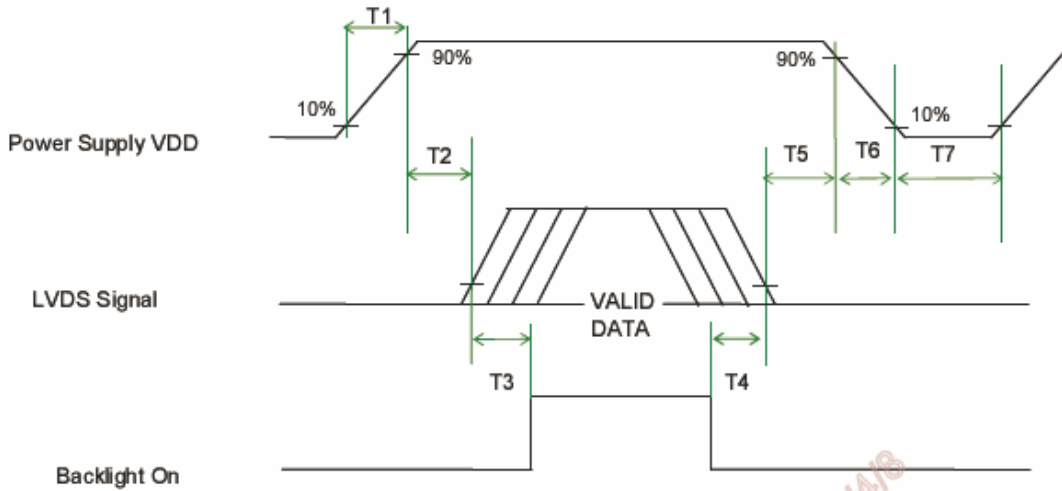
DE mode only

Timing diagram



Power ON/OFF Sequence

VDD power and lamp on/off sequence are as follows. Interface signals are also shown in the chart. Signals from any system shall be Hi-Z state or low level when VDD is off.



Power Sequence Timing

Parameter	Value			Unit
	Min.	Typ.	Max.	
T1	0.5	-	10	[ms]
T2	0	40	50	[ms]
T3	300	-	-	[ms]
T4	300	-	-	[ms]
T5	0.5	16	50	[ms]
T6	-	-	-	[ms]
T7	1000	-	-	[ms]

5.0 CONNECTOR and PIN ASSIGNMENT

TFT LCD Module

Connector Name / Designation	Interface Connector / Interface card
Manufacturer	JAE / STM
Type Part Number	FI-XB30SSL-HF15 / MSBKT2407P30HB
Mating Housing Part Number	FI-X30HL

PIN ASSIGNMENT

Pin#	Signal Name	Pin#	Signal Name
1	RxOIN0-	2	RxOIN0+
3	RxOIN1-	4	RxOIN1+
5	RxOIN2-	6	RxOIN2+
7	VSS	8	RxOCLKIN-
9	RxOCLKIN+	10	RxOIN3-
11	RxOIN3+	12	RxEIN0-
13	RxEIN0+	14	VSS
15	RxEIN1-	16	RxEIN1+
17	VSS	18	RxEIN2-
19	RxEIN2+	20	RxECLKIN-
21	RxECLKIN+	22	RxEIN3-
23	RxEIN3+	24	VSS
25	VSS	26	NC
27	VSS	28	VCC
29	VCC	30	VCC

6.0 OPTICAL SPECIFICATION

Item	Unit	Conditions	Min.	Typ.	Max.
Viewing Angle	[degree]	Horizontal (Right) CR = 10 (Left)	75 75	85 85	-
		Vertical (Up) CR = 10 (Down)	70 70	80 80	-
		Horizontal (Up) CR = 5 (Down)	75 75	85 85	-
		Vertical (Up) CR = 5 (Down)	75 75	85 85	-
Luminance Uniformity	[%]	9 Points	-	80	-
Optical Response Time	[msec]	Rising	-	3.6	5.7
		Falling	-	1.4	2.3
		Rising + Falling	-	5	8
Color / Chromaticity Coordinates (CIE)		Red x	0.617	0.647	0.677
		Red y	0.310	0.340	0.370
		Green x	0.258	0.288	0.318
		Green y	0.575	0.605	0.635
		Blue x	0.115	0.145	0.175
		Blue y	0.041	0.071	0.101
White Luminance (At CCFL= 7.5mA)	[cd/m ²]	White x	0.283	0.313	0.343
		White y	0.299	0.329	0.359
Contrast Ratio			600	1000	-
Cross Talk (At 60Hz)	[%]		-	-	1.5
Flicker	[dB]		-	-	-20

7.0 LED DRIVING BOARD SPECIFICATIONS

1. LED Application

This specification is applied to LED converter unit for DLF/DLH1968 (1600 nits) LED backlight

Specifications:

- $V_{in}=+10V$ to $+14V \pm 10\%$
- Constant current and voltage function.
- No load voltage=30V
- LED Light Bar output Voltage=22.3V(TYPICAL)
- LED Light Bar output current=1.568A @100%(TYPICAL)
- Normal LED Light Bar working frequency=125KHz ± 5 KHz
- Nominal PWM frequency=200Hz $\pm 5\%$
- PWM duty cycle range=0 to 100%
- Average electrical efficiency > 90%

2. Operating Characteristics

Item	Symbol	Conditions	MIN.	TYP.	MAX.	Unit
Input Voltage	V_{in}		10.0	12.0	14.0	V
Input Current (Low Brightness)	I_{inL}	$V_{IN}=12V, V_{adj}=5V$	0.0	-----	-----	mA
Input Current (High Brightness)	I_{inH}	$V_{IN}=12V, V_{adj}=0V$	2.93	3.16	3.17	A
LED Current (Low Brightness)	I_{outL}	$V_{IN}=12V, V_{adj}=5V$	0.0	-----	-----	Arms
LED Current (High Brightness)	I_{outH}	$V_{IN}=12V, V_{adj}=0V$	1.234	1.568	1.810	A
Working Frequency	Freq	$V_{IN}=12V, V_{adj}=0V$	120	125	130	KHZ
PWM Frequency	Freq	$V_{IN}=12V$	180	200	220	HZ
Brightness Control	V_{adj}	Connection of Voltage	0.5	-----	4.8	V
ON/OFF Control	$V_{on/off}$	Normal Operation	2	-----	5	V
Output Voltage	V_{out}	$V_{IN}=12V, V_{adj}=0V$	21.67	22.30	22.79	V
Efficiency	η	$V_{IN}=12V, V_{adj}=0V$	91.27	92.21	92.95	%

Note 1: Efficiency = $[(I_{outH} * V_{out}) / (I_{inH} * V_{in})] * 100\%$, Tolerance $\pm 0.5\%$

3. Connector Socket

3-1. Input Connector :J1(JST B2B-PH-K-S or Compatible):

PIN No	Symbol	Description
1	Vin	DC+12V
2	Vin	DC+12V
3	Vin	DC+12V
4	GND	Ground
5	GND	Ground
6	GND	Ground
7	Brightness	Brightness Control 5V~0V
8	Control	ON/OFF Control 0.8V(OFF) 2~5V(ON)

3-2 . Output Connector :J2,J3(JST S2B-EH or Compatible):

:

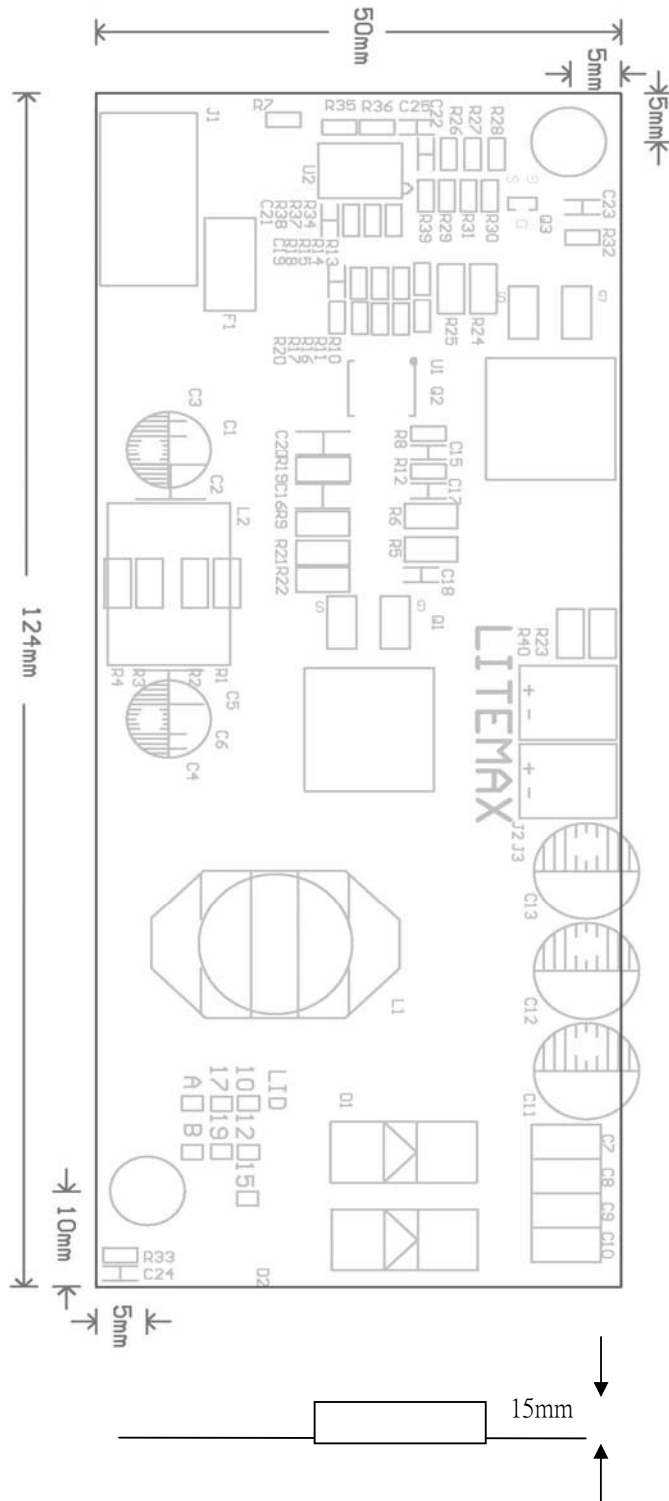
PIN NO	Symbol	Description
1	Output	LED High Voltage(+)
2	Output	LED Low Voltage (-)

4. Mechanical Characteristics

Dimension: 124mm*50mm*15mm

**INPUT CONNECTOR
J1:**

- PIN1:VIN
- PIN2:VIN
- PIN3:VIN
- PIN4:GND
- PIN5:GND
- PIN6:GND
- PIN7:BRIGHTNESS
- PIN8:ON/OFF



8.0 AD2662 SPECIFICATIONS (DLH1968 only)

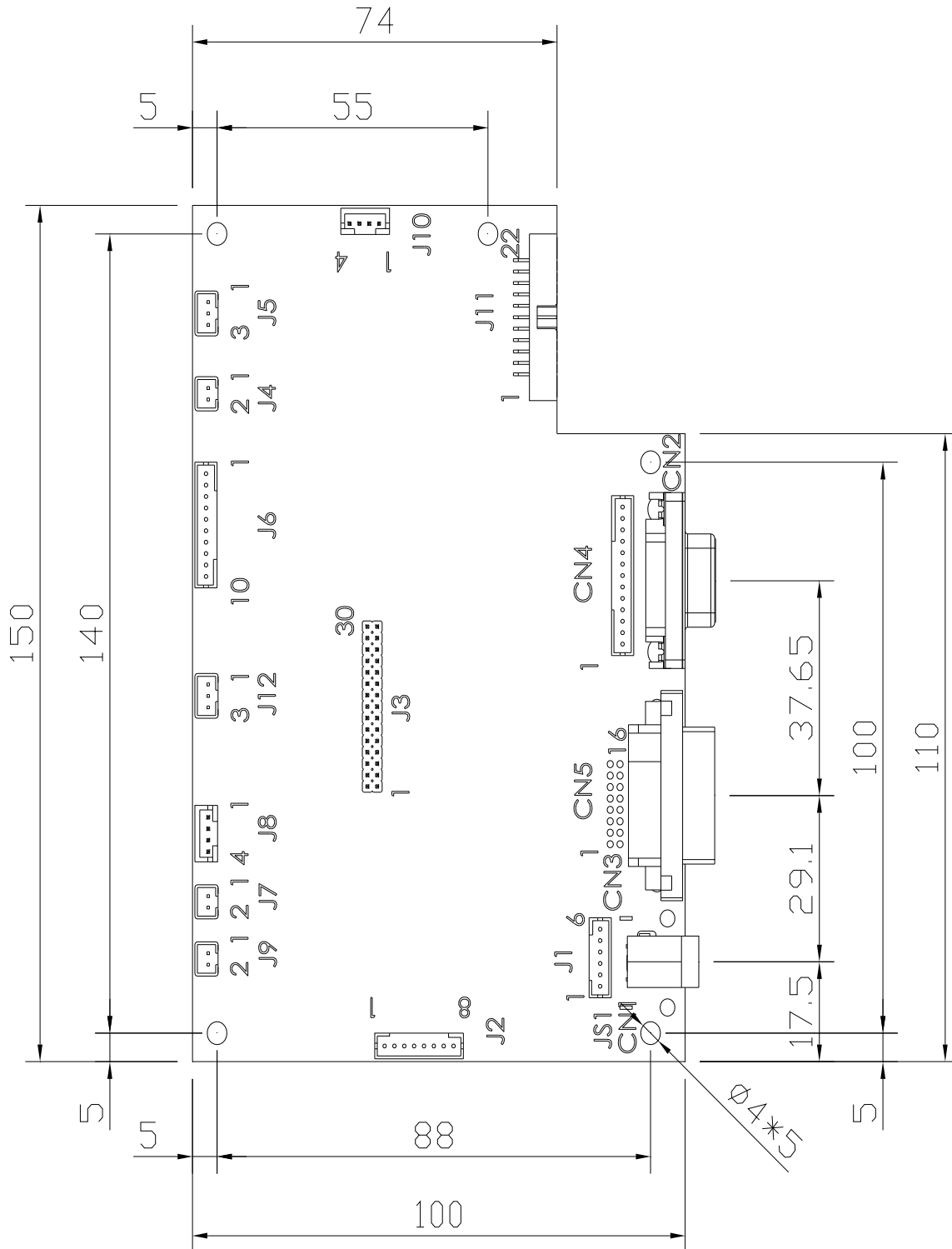
We developed this A/D board to support industrial high brightness and commercial applications. This A/D board has many functions. It has an external luminance sensor as an option, an optional VR button to control brightness, fan rotation and RS232. Rev.1 is European RoHS compliant.

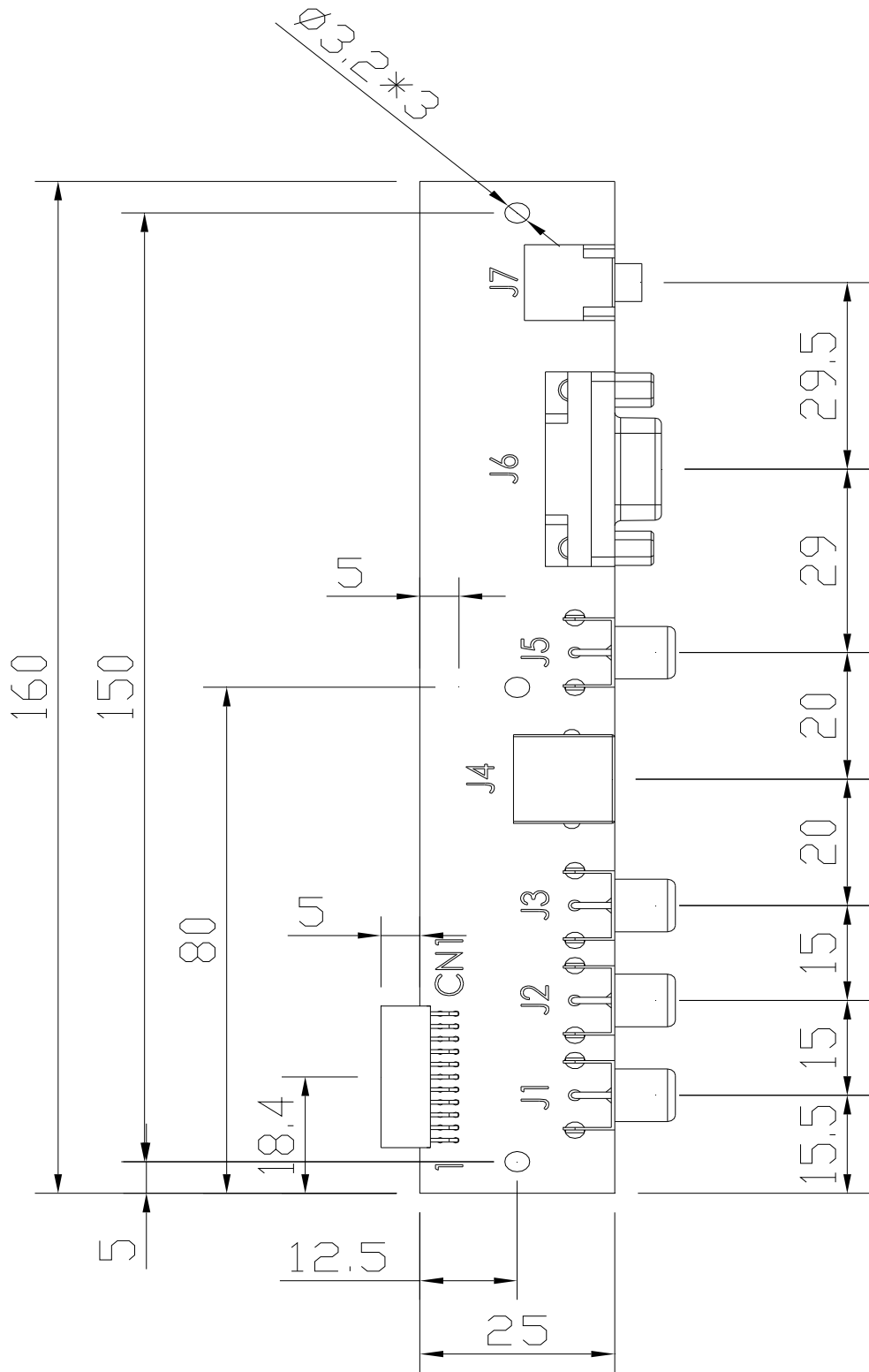
9.1 General Description

- Max Resolution Up To WUXGA
- Analog RGB Input up to 205MHz
- ULTRA-RELIABLE DVI INPUT
- Dual/single LVDS interface
- Support Panel DC5V or 3.3V, 12V Output
- External Fan Control by Software
- OSD Control
- Inverter Analog or PWM Dimming Control
- *External V.R. brightness control (optional)
- *External light sensor brightness control (optional)
- *External RS232 control (optional)
- Input Power 12V DC
- CBVS, S-VIDEO, YCbCr (optional) INPUT
- Audio in and 2Wx2 Audio Out(optional)
- IR Remote control(optional)

9.2 Outline Dimensions

AD2662GD 150mmX100mmX20mm



I/O BOARD 160mmX25mmX15mm


9.3 AD2662 Board Pin Define

J3: Panel connector

Pin No.	Function	Pin No.	Function
1	RxO0+	16	RxE1-
2	RxO0-	17	RxE2+
3	RxO1+	18	RxE2-
4	RxO1-	19	RxEC+
5	RxO2+	20	RxEC-
6	RxO2-	24	RxE3+
7	RxOC+	22	RxE3-
8	RxOC-	23	GND
9	RxO3+	24	GND
10	RxO3-	25	GND
11	GND	26	GND
12	GND	27	GND
13	RxE0+	28	PANEL-VCC
14	RxE0-	29	PANEL-VCC
15	RxE1+	30	PANEL-VCC

CN3: DVI-D INPUT Connector

Pin No.	Function	Pin No.	Function	Pin No.	Function
1	T.M.D.S. Data2-	9	T.M.D.S. Data1-	17	T.M.D.S. Data0-
2	T.M.D.S. Data2+	10	T.M.D.S. Data1+	18	T.M.D.S. Data0+
3	T.M.D.S. Data2/4 Shield	11	T.M.D.S. Data1/3 Shield	19	T.M.D.S. Data0/5 Shield
4	T.M.D.S. Data4-	12	T.M.D.S. Data3-	20	T.M.D.S. Data5-
5	T.M.D.S. Data4+	13	T.M.D.S. Data3+	24	T.M.D.S. Data5+
6	DDC Clock	14	+5V Power	22	T.M.D.S. Clock Shield
7	DDC Data	15	Ground (for +5V)	23	T.M.D.S. Clock+
8	Not Connected	16	Hot Plug Detect	24	T.M.D.S. Clock-

CN5: DVI-D Connector (16pin 2.0mm)

Pin No.	Function	Pin No.	Function	Pin No.	Function
1	RX2-	7	DDC_SDA	13	GND
2	RX2+	8	DDC_SCL	14	GND
3	RX1-	9	GND	15	DVI HP
4	RX1+	10	GND	16	DVI_5V
5	RX0-	11	RXC-		
6	RX0+	12	RXC+		

CN2: Analog RGB Input connector (D-SUB 15Pin)

Pin No.	Symbol	Description	Pin No.	Symbol	Description
1	RED	Analog Red	9	+5V	+5VDDC
2	GREEN	Analog Green	10	SGND	Sync GND
3	BLUE	Analog Blue	11	NCD	Reserved
4	GND	Reserved	12	SDA	DDC Serial Data
5	NC	VGA_CAB	13	HSYNC	Horizontal Sync
6	RED_RTN	Red Return	14	VSYNC	Vertical Sync
7	GREEN_RTN	Green Return	15	SCL	DDC Data Clock
8	BLUE_RTN	Blue Return			

CN4: Analog RGB Input connector (13pin connector)

Pin No.	Symbol	Description	Pin No.	Symbol	Description
1	SCL	DDC Data Clock	8	BGND	Blue Return
2	SDA	DDC Serial Data	9	BLUE	Analog Blue
3	GND	Reserved	10	GGND	Green Return
4	+5V	+5VDDC	11	GREEN	Analog Green
5	GND	Reserved	12	RGND	Red Return
6	VSYNC	Vertical Sync	13	RED	Analog Red
7	HSYNC	Horizontal Sync			

JS1: Power DIN(12V)

Pin No.	Function	Pin No.	Function
1	12VDC	2	12VDC
3	GND	4	GND

JS1: Power Jack (12V)

Pin No.	Function	Pin No.	Function
1	12VDC	2	12VDC

J1: Power connector (12V) (6PIN 2.0mm)

Pin No.	Function	Pin No.	Function
1	12VDC	4	GND
2	12VDC	5	GND
3	12VDC	6	GND

J8: Power connector (5V/12v)(4PIN 2.0mm)

Pin No.	Function	Pin No.	Function
1	5VDC	2	GND
3	12VDC	4	GND

J2: Inverter Connector(8PIN 2.0mm)

Pin No.	Symbol	Description	Pin No.	Symbol	Description
1	ON/OFF	Backlight ON/OFF	5	GND	GND
2	BRIGHT	Dimming adjust	6	12VDC	Input 12VDC
3	GND	GND	7	12VDC	Input 12VDC
4	GND	GND	8	12VDC	Input 12VDC

J7, J9: FAN (2PIN 2.0mm)

Pin No.	Function	Pin No.	Function
1	FAN(+)	2	GND

J6: Key Pad (9PIN 2.0mm)

Pin No.	Function	Pin No.	Function
1	POWER KEY	6	MENU KEY
2	GREEN LED	7	AUTO KEY
3	RED LED	8	GND
4	DOWN KEY	9	GND
5	UP KEY		

J10: Speaker Connector (4PIN 2.0mm)

Pin No.	Function	Pin No.	Function
1	SPK-R	2	GND
3	GND	4	SPK-L

J11 Extern Funtion Connector (11P X 2PIN 2.0mm)

Pin No.	Function	Pin No.	Function
1	Pb	2	Y
3	GND	4	Pr
5	GND	6	SY
7	GND	8	SC
9	GND	10	AV
11	GND	12	GND
13	TXD	14	RXD
15	GND	16	GND
17	GND	18	GND
19	Audio-L	20	Audio-R
24	GND	22	GND

J5: Ambient (3PIN 2.0mm)

Pin No.	Function	Pin No.	Function
1	3.3VDC	2	Sensor Out

J4: VR connector (3PIN 2.0mm)

Pin No.	Function	Pin No.	Function
1	3,3VDC	2	VR Out
3	GND		

J12: IR Connector(3PIN 2.0mm)

Pin No.	Function	Pin No.	Function
1	IR Out	3	3.3VDC
2	GND	4	

JP1: PANEL VCC (3PIN 2.54mm)

Pin No.	Function	Pin No.	Function
1-2	12V	5-6	3.3V
3-4	5V		

9.4 I/O BOARD Pin Define

J1:Component Y

Pin No.	Function	Pin No.	Function
1	Y	2	GND

J2:Component Cb

Pin No.	Function	Pin No.	Function
1	Cb	2	GND

J3:Component Cr

Pin No.	Function	Pin No.	Function
1	Cr	2	GND

J4:S-Video

Pin No.	Function	Pin No.	Function
1	GND	2	GND
3	Luminance	4	Chrominance

J5:Composite

Pin No.	Function	Pin No.	Function
1	Y	2	GND

J6:D-SUB9(RS232)

Pin No.	Function	Pin No.	Function
1	NC	2	TXD
3	RXD	4	NC
5	GND	6	NC
7	NC	8	NC
9	NC		

CN1:11P X 2 Connector

Pin No.	Function	Pin No.	Function
1	Component Cb	2	Component Y
3	GND	4	Component Cr
5	GND	6	S-Video Y
7	GND	8	S-Video C
9	GND	10	Composite
11	GND	12	GND
13	TXD	14	RXD
15	GND	16	GND
17	GND	18	GND
19	Audio IN(L)	20	Audio IN(R)

9.5 IR Receive Board Pin Define

J1: IR Connector

Pin No.	Function	Pin No.	Function
1	DATA OUT	2	GND
3	VCC	4	NC

9.6 DC Characteristics.

Power Consumption	10W	Note1
Operation Temperature	0~70	°C
Storage Temperature	-20~85	°C

Note: These values are for the A/D board body.

9.7 OSD menu

Here are some instructions for you to use the OSD (On Screen Display). By pressing the “menu”, you will see the below picture.

Timing shows resolution, H-frequency, and V-frequency of the panel. Version shows the firmware control version. This 2 information is not changeable by user.



There are 7 sub pages inside the OSD manual, Brightness, Signal select, Sound, Color, Image, Tools, and Exit.

When you press “menu” button, you enter the “Brightness” sub page. You will see 5 selections:



press “menu”



press “menu”



press “menu”



OSD Brightness:



press “right” key



press “menu” once, you can go into adjust the brightness. Press “left” you can dim down the brightness to “0”, while press “right” you can increase the brightness to “100”.



Ambient light sensor: press this Icon, must to accompany with Litemax ambient light sensor to auto dimming.(OPTION)



Potentiometer: press this icon, adjust VR function.(OPTION)



Ambient light sensor with OSD offset: press this Icon



Press “menu” once, you can adjust min. luminance to fit your application (OPTION)

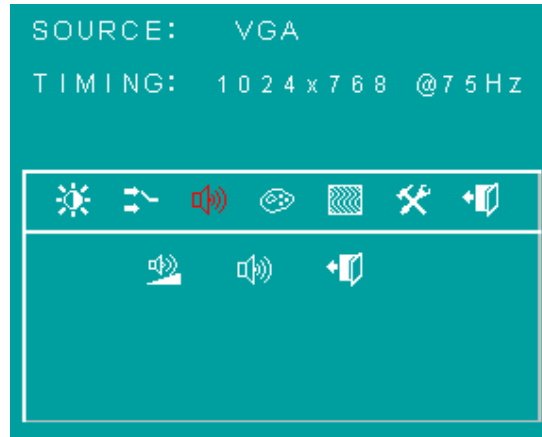


Contrast: Press “menu” and “right” you can adjust the contrast from “0” to “100” by pressing the “left” and “right”.



Exit: You can exit this sub menu back to normal screen.

Sound :



There are 3 options for “Sound” sub page.



Audio Volume: Audio volume adjustment.



Mute: You can mute the speaker by pressing this option.



Exit: back to the normal screen.



Auto Color: by press this “Auto Color” option, you can get the optimal color performance.



sRGB: Windows standard color setting.



Color Tempure: You can have 3 options in this selection.



Color Tempure User



Color Tempure_6500K



Color Tempure_9300K

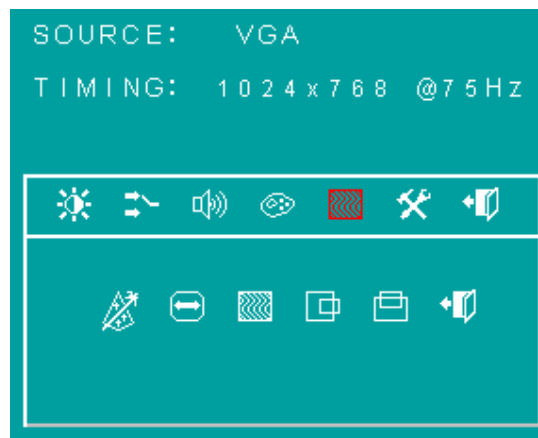
“user mode”, “6500K” (Warm color scheme), “9300K (Cold color scheme).
Def ault is “user”, and inside all “R”, “G”, and “B” are set “100”



Exit: back to the normal screen.

Image :

Go into the “Image” page, you can see below picture.





Auto just: Pressing this option, the AD2662 will adjust the optimal frequency of horizontal and vertical. You will see “Auto tune...” On the screen for around 3 seconds.



Clock: If you are not satisfied about the Autotune result, you can adjust manually by “Clock”. The screen will be “wider” if you adjust this function.



Phase: If you see “double image” on characters, you can adjust “Phase” to make it perfect image.



HPos: You can shift the screen horizontally by this function.



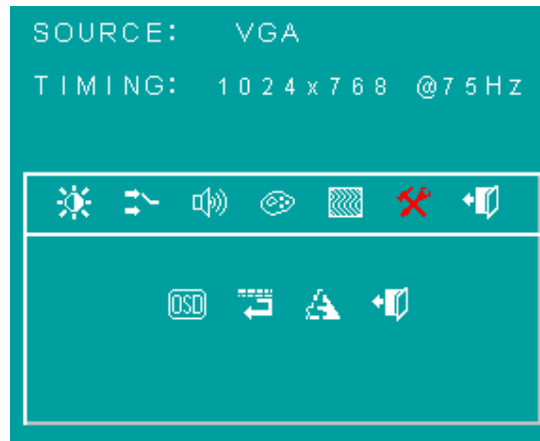
Vpos: You can shift the screen vertically by this function.



Exit: Back to normal screen.

TOOLS :

On the “Tools” sub menu, you will see 4 icons.



Osd Control: Select this option, you will see 4 more options:





Osd_time: You can selection the time of OSD from 2 sec. to 16 sec. □



Osd_HPos: You can move the OSD horizontally over the screen.



Osd_VPos: You can move the OSD Vertically over the screen.



Exit: back to main menu.



Factory_Reset: By pressing this, the screen will be back to the factory setting on very beginning and lost all the personal settings.



Sharpness: You can make the characters looks sharper.



Exit

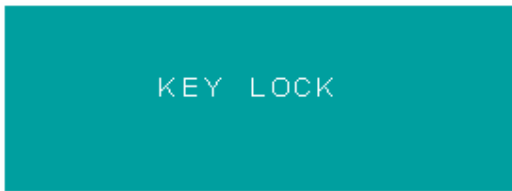
BURNIN MODE :

Factory Burn-in mode: While your VGA cable is connected on the monitor, press “Menu” and Left and Right <” simultaneously, you will see “BURN IN MODE” on the center of the screen for 3 sec. Then unplug the VGA cable, the screen will show Red, Green, Blue, White, and Black in sequence automatically.

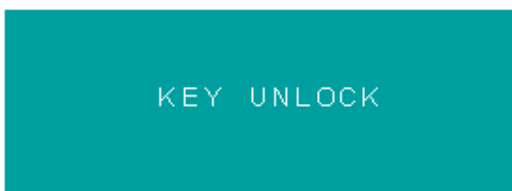
You can plug in the VGA signal cable, and re-plug the power connector to exit the burn-in mode.

KEY LOCK MODE :

OSD Lock Function: It is possible to lock all the OSD buttons to prevent unauthorized changes to occur by pressing “Menu” and “right >” buttons simultaneously. You will see the “lock” icon below on the center of the screen for 3 seconds. If any button is pushed after the lock function is initiated, the below icon will appear on the screen.'



To release the OSD lock, press “Menu” and “Right >”. The below icon will appear on the center of the screen for 3 seconds. Now all OSD keys are active again.



9.0 MECHANICAL DRAWING

DLF/DLH1968

10.0 PRECAUTIONS

HANDLING PRECAUTIONS

- (1) The module should be assembled into the system firmly by using every mounting hole. Be careful not to twist or bend the module.
- (2) While assembling or installing modules, it can only be in the clean area. The dust and oil may cause electrical short or damage the polarizer.
- (3) Use fingerstalls or soft gloves in order to keep display clean during the incoming inspection and assembly process.
- (4) Do not press or scratch the surface harder than a HB pencil lead on the panel because the polarizer is very soft and easily scratched.
- (5) If the surface of the polarizer is dirty, please clean it by some absorbent cotton or soft cloth. Do not use Ketone type materials (ex. Acetone), Ethyl alcohol, Toluene, Ethyl acid or Methyl chloride. It might permanently damage the polarizer due to chemical reaction.
- (6) Wipe off water droplets or oil immediately. Staining and discoloration may occur if they left on panel for a long time.
- (7) If the liquid crystal material leaks from the panel, it should be kept away from the eyes or mouth. In case of contacting with hands, legs or clothes, it must be washed away thoroughly with soap.
- (8) Protect the module from static electricity, it may cause damage to the C-MOS Gate Array IC.
- (9) Do not disassemble the module.
- (10) Do not pull or fold the lamp wire.
- (11) Pins of I/F connector should not be touched directly with bare hands.

STORAGE PRECAUTIONS

- (1) High temperature or humidity may reduce the performance of module. Please store LCD module within the specified storage conditions.
- (2) It is dangerous that moisture come into or contacted the LCD module, because the moisture may damage LCD module when it is operating.
- (3) It may reduce the display quality if the ambient temperature is lower than 10 °C. For example, the response time will become slowly, and the starting voltage of lamp will be higher than the room temperature.

OPERATION PRECAUTIONS

- (1) Do not pull the I/F connector in or out while the module is operating.
- (2) Always follow the correct power on/off sequence when LCD module is connecting and operating. This can prevent the CMOS LSI chips from damage during latch-up.