



LED B/L Specifications

Key Features

- Sunlight Readable
- LED Backlight
- -20°C~60°C Wide Temp.
- Low Power Consumption
- High Shock & Vibration Resistance
- 90% High Uniformity
- Low EMI Noise
- Wide Dimming
- Multiple Mounting Choices
- 70000hrs Life Expectancy

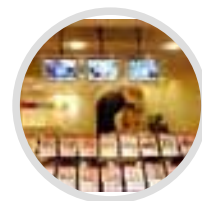
New coming soon!



DLF/DLH1075 (SHAR LQ104S1LG61)

Model No.	DLF1075	DLH1075
LCD Display	10.4" LED Backlight LCD	10.4" LED Backlight LCD
Display Area	211.2 x 158.4 mm	210.4 x 157.8 mm
Brightness	1000 cd/m ²	1000 cd/m ²
Resolution	800 x 600 (SVGA)	800 x 600 (SVGA)
Contrast Ratio	500 : 1	500 : 1
Pixel Pitch (mm)	0.264(H) x 0.264(V)	0.264(H) x 0.264(V)
Viewing Angle	150°(H), 150°(V)	150°(H), 150°(V)
Display Colors	262K colors	262K colors
Response Time	35ms	35ms
Sync	LVDS x 1 Channel	LVDS x 1 Channel
Power Consumption	16.2W	21.2W
LED Driving Board	LI D10A	LI D10A
Control Board (Optional)		AD5621GA (Standard)
F / R Control Button		Power Switch, Menu, Select (+,-), Auto
OSD Menu		Brightness, Contrast, H/V Position, Color, Phase, Clock....
Dimensions (WxHxD)	246.5x175.4x13.75mm	246.5x175.4x13.75mm
Weight	700g	800g
Optional	<input checked="" type="checkbox"/> AOT <input checked="" type="checkbox"/> Touch Screen	

Specifications are subject to change without notice. All brands or product names are trademarks or registered trademarks of their respective companies.



Control Board (Optional)	AD5621GA/AD5621GD/AD5766GDVA/AD1501GDV
<input checked="" type="checkbox"/> AD5621GA	VGA+Audio
<input checked="" type="checkbox"/> AD5621GD	VGA+DVI
<input checked="" type="checkbox"/> AD5766GDVA	VGA+CVBS+S-Video+Audio (Optional DVI / Component)
F / R Control Button	5 Key / 4 Key (Optional)
<input checked="" type="checkbox"/> 5 Key	Power Switch, Menu, Select (+,-), Auto
<input checked="" type="checkbox"/> 4 Key	Power Switch, Menu, Select (+,-)

DLF= Panel+Driving Board

DLH= Panel+Driving Board+Control Board