



Platform

Platform Specifications

Key Features

- Sunlight Readable
- LED Backlight
- -20°C~60°C Wide Temp.
- Low Power Consumption
- High Shock & Vibration Resistance
- 90% High Uniformity
- Low EMI Noise
- Wide Dimming
- Multiple Mounting Choices
- 70000hrs Life Expectancy



SLD1246 (CMO G121S1-L01)

Model No.	SLD1246
LCD Display	12.1" LED Backlight LCD
Display Area	246 x 184.5mm
Brightness	1000 cd/m ²
Resolution	800 x 600 (SVGA)
Contrast Ratio	1100 : 1
Pixel Pitch (mm)	0.3075(H) x 0.3075(V)
Viewing Angle	140°(H), 140°(V)
Display Colors	262,144 colors
Response Time	25ms (Typical)
Sync	LVDS x 1 Channel
Power Consumption	22W
LED Driving Board	LI D12A
Control Board (Optional)	AD5621GA (Standard)
F / R Control Button	Power Switch, Menu, Select (+,-), Auto
OSD Menu	Brightness, Contrast, H/V Position, Color, Phase, Clock....
Dimensions (WxHxD)	338x278x59.3mm
Weight	3.51kgs
Optional	<input checked="" type="checkbox"/> AOT <input checked="" type="checkbox"/> Touch Screen

Specifications are subject to change without notice. All brands or product names are trademarks or registered trademarks of their respective companies.

Control Board (Optional)	AD5621GA/AD5621GD/AD5766GDVA/AD1501GDV
<input checked="" type="checkbox"/> AD5621GA	VGA+Audio
<input checked="" type="checkbox"/> AD5621GD	VGA+DVI
<input checked="" type="checkbox"/> AD5766GDVA	VGA+CVBS+S-Video+Audio (Optional DVI / Component)
F / R Control Button	5 Key / 4 Key (Optional)
<input checked="" type="checkbox"/> 5 Key	Power Switch, Menu, Select (+,-), Auto
<input checked="" type="checkbox"/> 4 Key	Power Switch, Menu, Select (+,-)

SLO= Open Frame
SLD= Industrial Casing

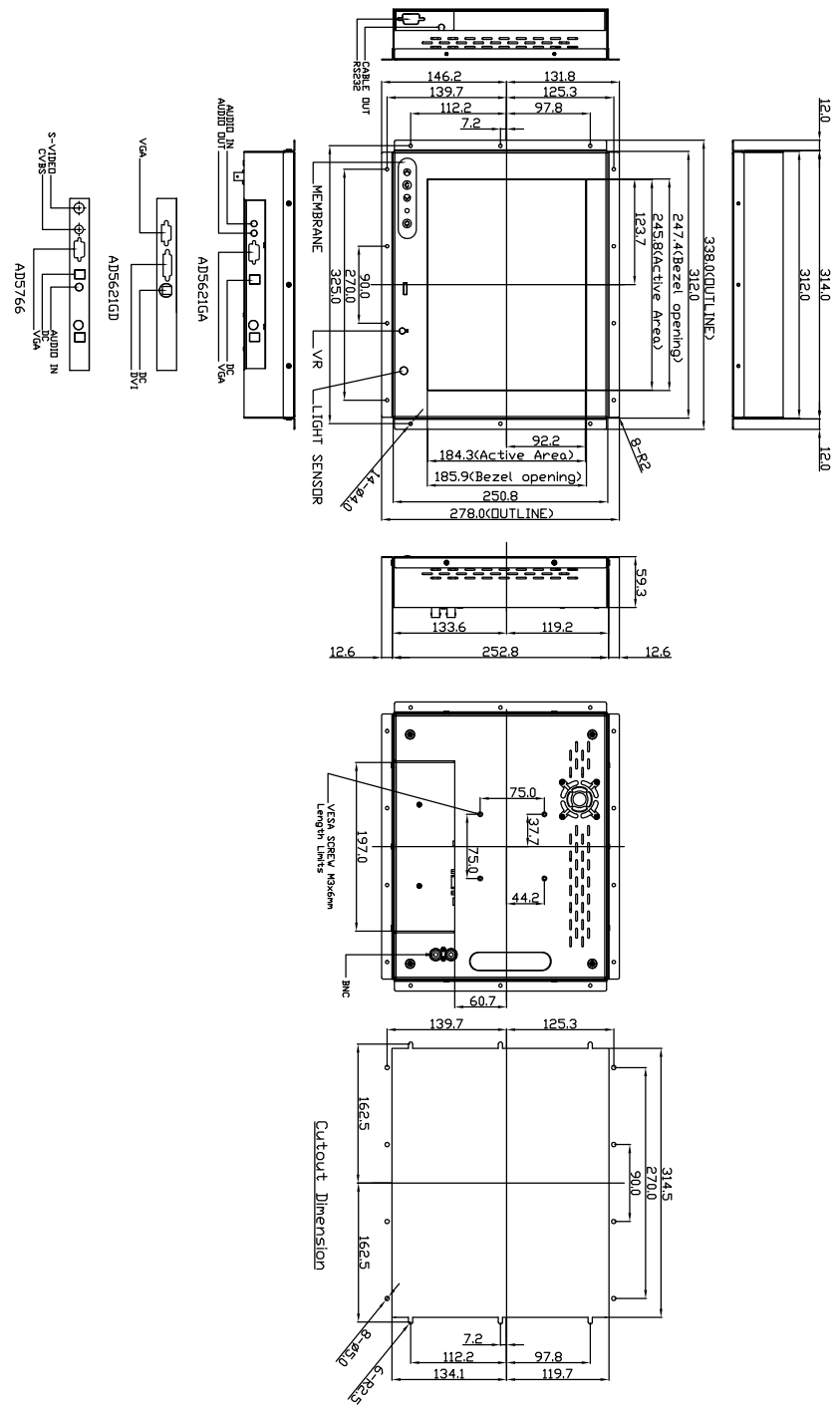




Platform

Platform Specifications

Outline Dimensions
unit:mm



- Note:1. OSD membrane can be on front or rear cover.
 2. 4 different AD boards can be selectable.
 3. Light sensor and VR are optional function.
 4. Temper glass and touch screen can be installed.

Enrich your visual world....