

Features

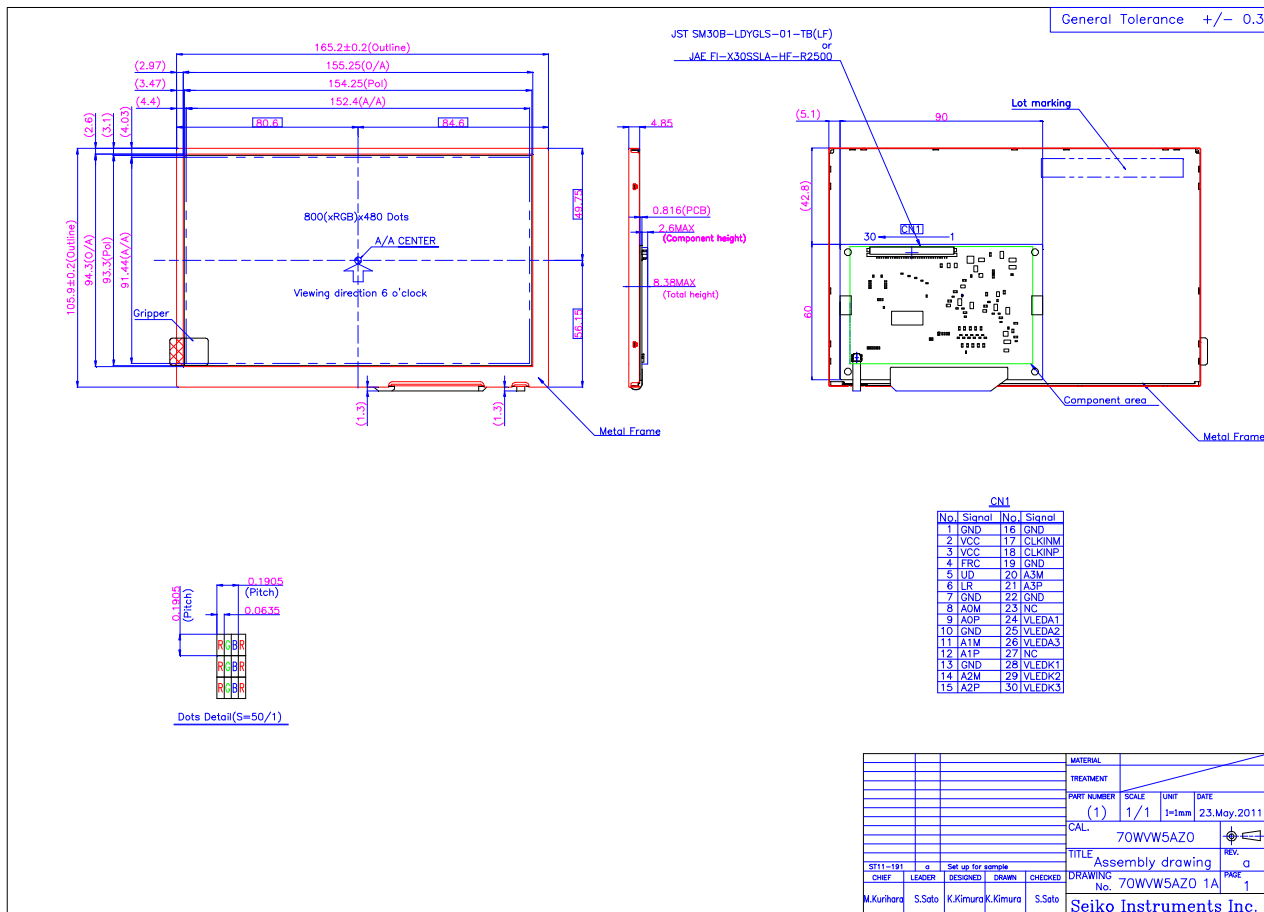
- LVDS Interface
- Thin & Light Weight
- LED Backlight
- Built-in Timing Controller
- RoHS Compliant



Important
Specifications above are subject to change without notice.

Rev. a. 0 (2011/06/27)

Outline Dimension



General Spec

Product Code	70WVW5A
Number of Pixel	800(RGB)x480, RGB Vertical Stripe
Display Mode	a-Si TFT (TN), Transmissive, Normally White
Number of Color	262K/16.2M colors
Active Area	152.4(W) x 91.44(H) mm (7.0")
Dot Pitch	0.1905(W)(RGB) x 0.1905(H) mm (133dpi)
Module Size	165.2(W) x 105.9(H) x 8.38(T) mm (without FPC)
Weight	145.3 g Typ.
Interface	LVDS(8bit or 6bit)
Backlight	7LEDs Serial x 3
Polarizer Surface	Anti Glare Coat
Operating Temp.	-20°C to 70°C
Storage Temp.	-30°C to +80°C

Optical and Electrical Spec

Contrast Ratio	400 : 1 Typ.
Luminance	350cd/m2 Typ. (IL=20mA)
NTSC Ratio	45% Typ.
Viewing Angle(U/D/R/L)	55/65/70/70 (@CR≥10)
Response Time	(5+11)ms Typ. (@25°C)
Driver IC	Source: HX8262A Gate: HX8678A
Input Voltage	VCC:3.3+/-0.3V
Power Consumption	180mW Typ.(LCD), 1300mW Typ.(Backlight) VCC=3.3V All Black Pattern